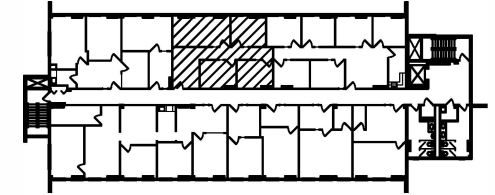
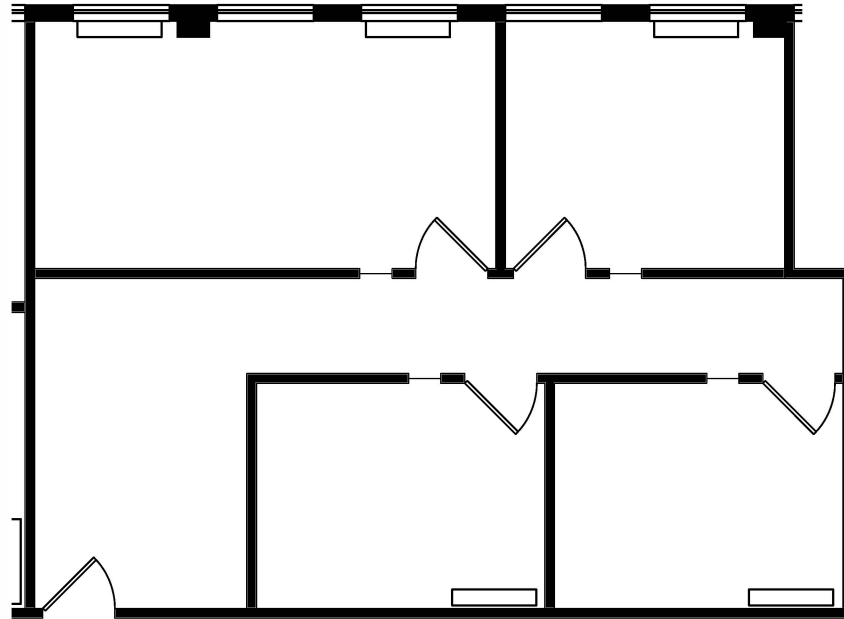


BOULEVARD 25 - 1777 South Bellaire Street

Scale: 1/8" = 1'-0"

Level 4

June 25, 2024



KEY PLAN

SUITE 450 1,006 SF

boulevard **25**



MATRIX
GROUP, INC.

Lauren Quiram, Director of Leasing
lquiram@matrixgroupinc.com
(303) 300-5271